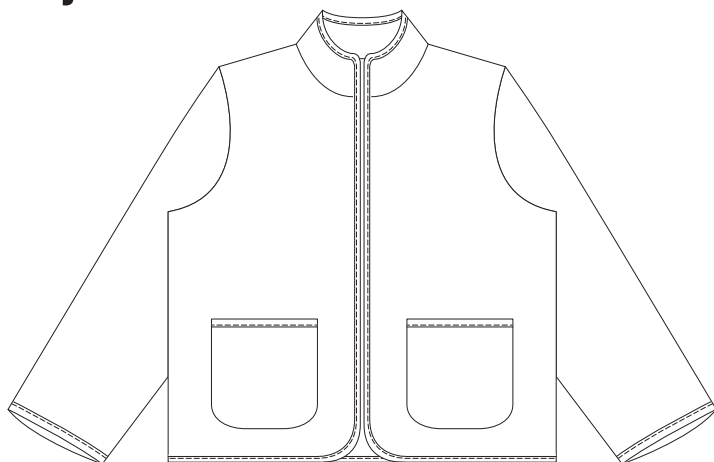


# DIY2406 Quilted jacket #hellejacket

Seam allowance is included on all patterns:  
Sew together with 1 cm



## You need the following fabric and accessories

UK Size	6	8	10	12	14	16	18
EU Size	34	36	38	40	42	44	46

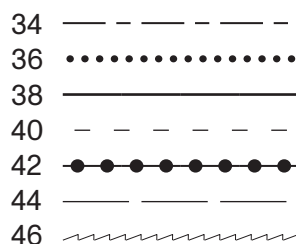
Outer fabric: w/135 cm	145	145	145	145	175	175	175
Inner fabric: w/135 cm	145	145	145	145	175	175	175
Interlining: w/ 75cm	275	275	275	275	275	275	275

Accessories:

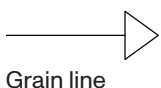
**Bias tape in size 34-40:** 450 cm

**Bias tape in size 42-46:** 450 cm

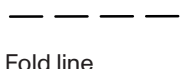
## Pick your size



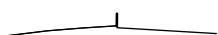
## Symbols you may find on your patterns



Grain line



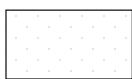
Fold line



Notch



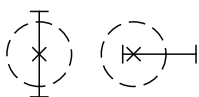
Gathering




Interlining



Cut line



Placement of button and buttonhole

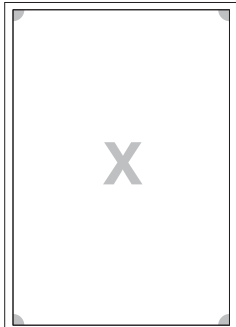
10 CM

10 CM

# Self made®

**CONTROL SQUARE:**  
Print this page, to check the square measurements:  
If the measurements do not match, please adjust your printer settings.

▲ *Unsure how to print? See this guide*

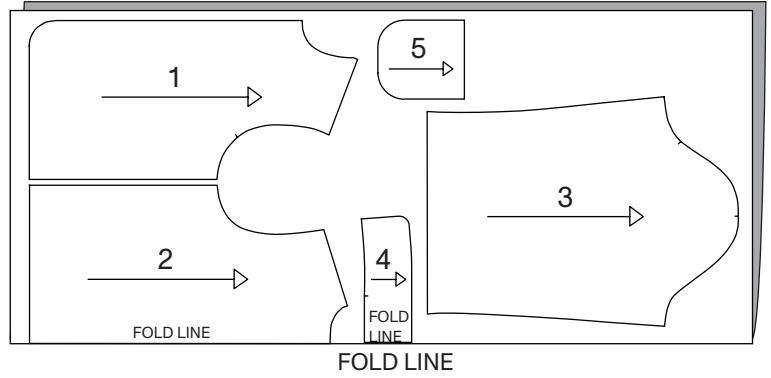
**CONTROL PAGE FIT:**  
In print preview check page margin. Margin have to be equal on all 4 sides of each page.



## Size 34-40

### You need to cut the following parts

Part 1	Front	x 2
Part 2	Back	x 1
Part 3	Sleeve	x 2
Part 4	Collar	x 1
Part 5	Pocket	x 2

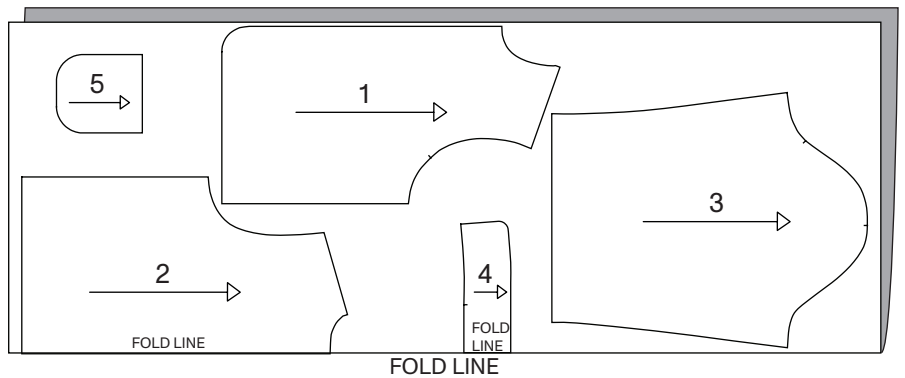


# 2

## Size 42-46

### You need to cut the following parts


Part 1	Front	x 2
Part 2	Back	x 1
Part 3	Sleeve	x 2
Part 4	Collar	x 1
Part 5	Pocket	x 2



Glue or tape your patterns together as shown in the diagram

**DIY2406 Quilted jacket shell/jacket**

Before you start, please read the instructions on the back of the pattern.



**You need the following tools and equipment:**

Tool	Quantity
Scissors	1 pair
Seam ripper	1
Hand sewing needle	1
Hand sewing thread	1 spool
Iron	1
Ironing board	1
Seam allowance	1.5 cm
Quilting foot	1
Quilting machine	1

**Materials:**

Material	Quantity
Quilted fabric	1.5 m (5 ft)
Interfacing	1.5 m (5 ft)
Collar fabric	1.5 m (5 ft)
Buttons	2

**Notes:**

- 1.5 cm (5/8") seam allowance
- 1.5 cm (5/8") seam allowance

**1** **Self made** 10 CM

**2**

**3** *Place on fabric, pin together and glue or tape as shown in the diagram.*

**4** **DIY2406 PRESS TEMPLATE FOR POCKET**

**5** **DIY2406 FRONT POCKET** INCL. SEAM ALLOWANCE

**6**

**7**

**8** **DIY2406 PART 4 COLLAR** INCL. SEAM ALLOWANCE FOLDLINE

**9**

**10**

**11** **Self made** **DIY2406 PART 1** INCL. SEAM ALLOWANCE

**12**

**13**

**14**

**15** **DIY2406 BACK** INCL. SEAM ALLOWANCE FOLDLINE

**16**

**17**

**18**

**19**

**20**

**21**

**22**

**23**

**24**

**25** **DIY2406 SLEEVE** INCL. SEAM ALLOWANCE

**26**

DIY2406  
PRESS TEMPLATE FOR POCKET

4



DIY2406  
PART 5  
POCKET



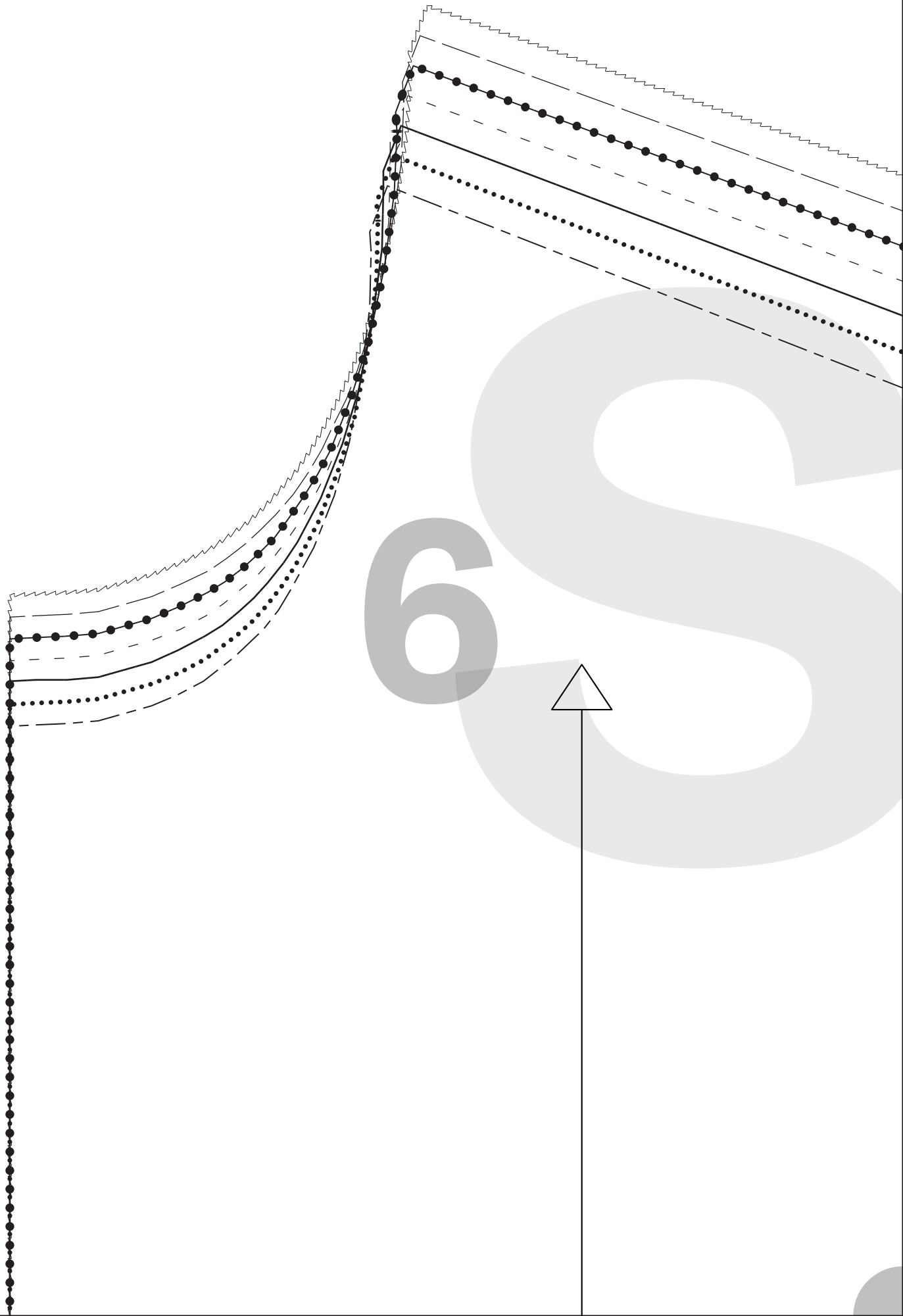
x 2

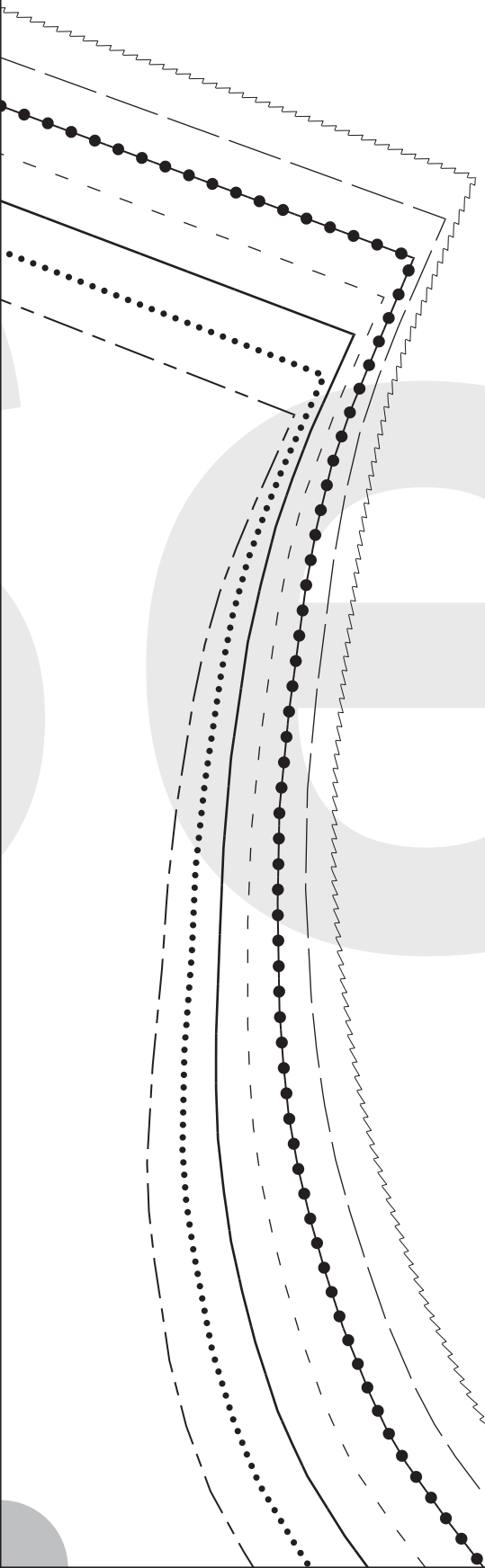
INCL. SEAM ALLOWANCE

5

6

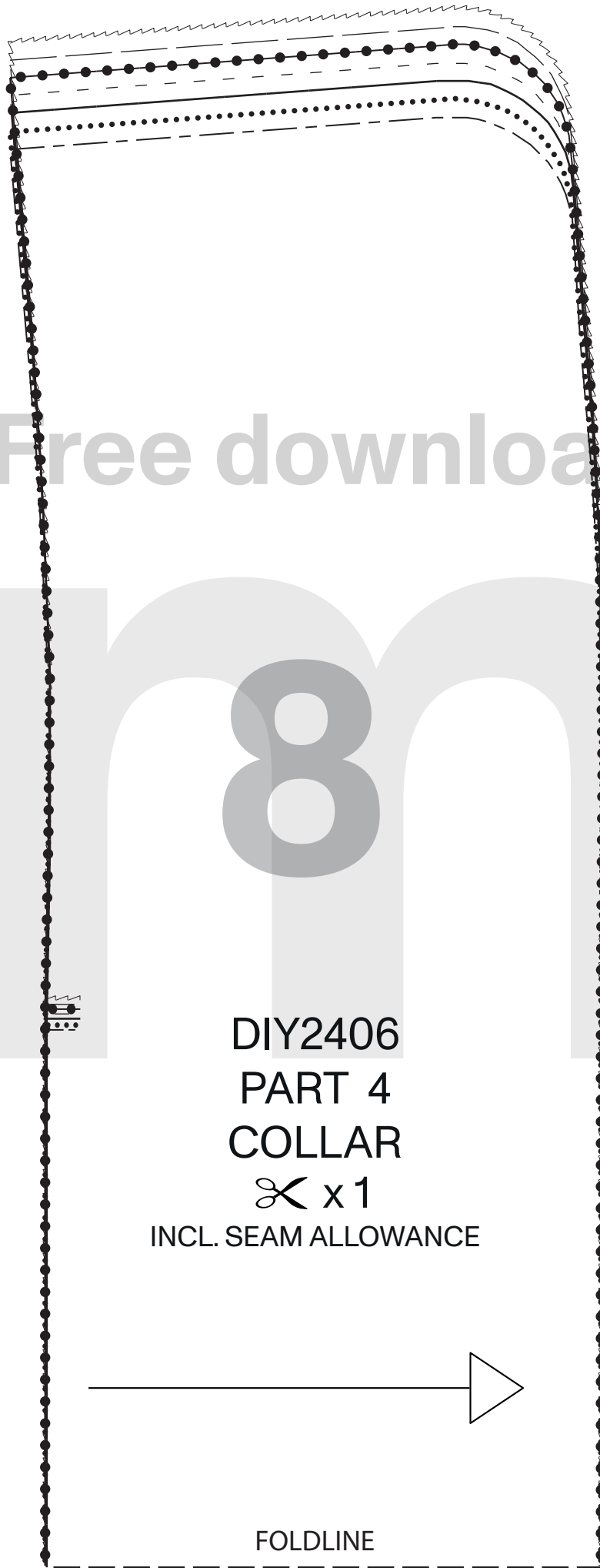
S





Large, faint, stylized letters 'E' and 'f' are visible in the background, suggesting a watermark or a large-scale graphic element.

Free download from



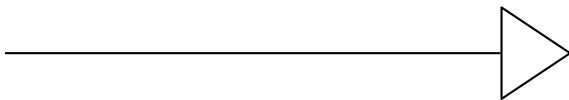
DIY2406

PART 4

COLLAR

✂ x1

INCL. SEAM ALLOWANCE

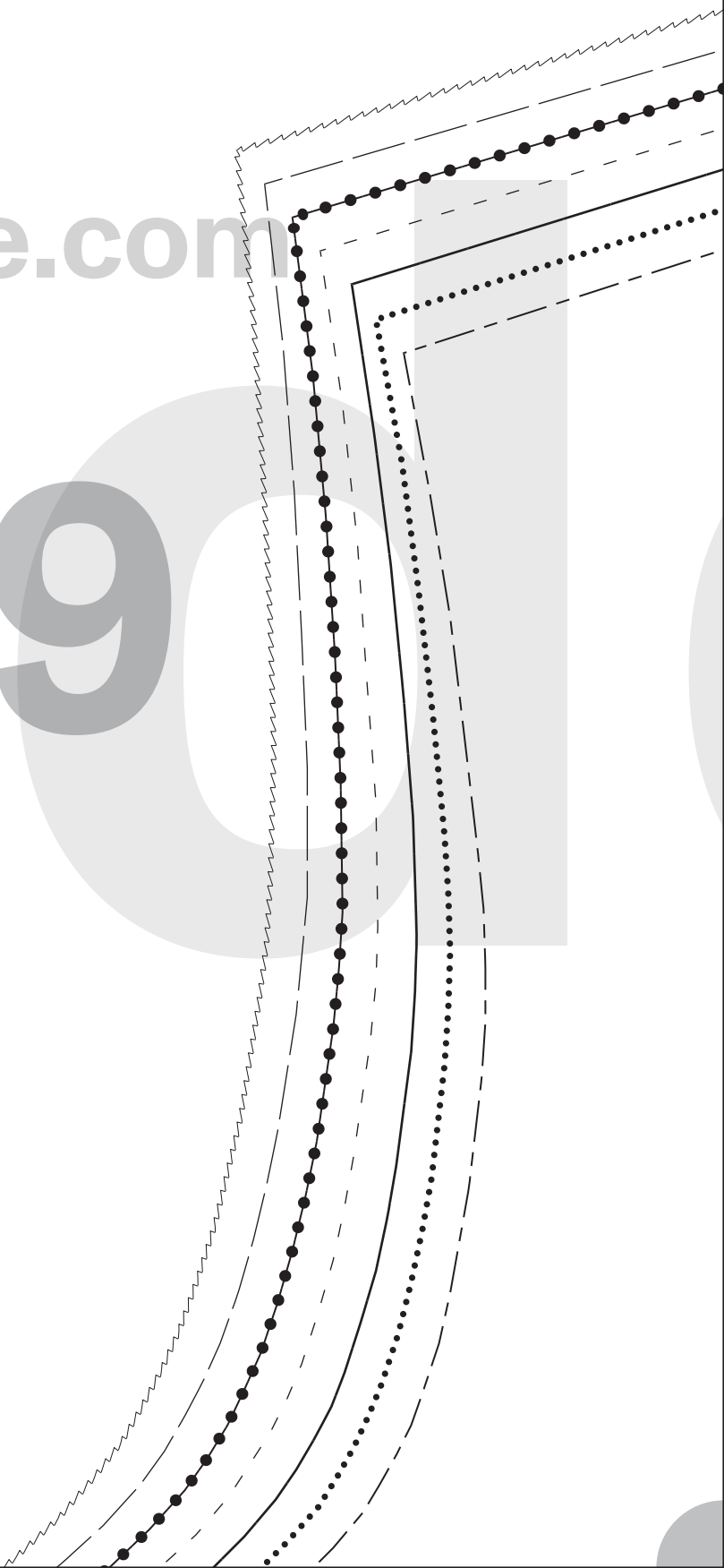


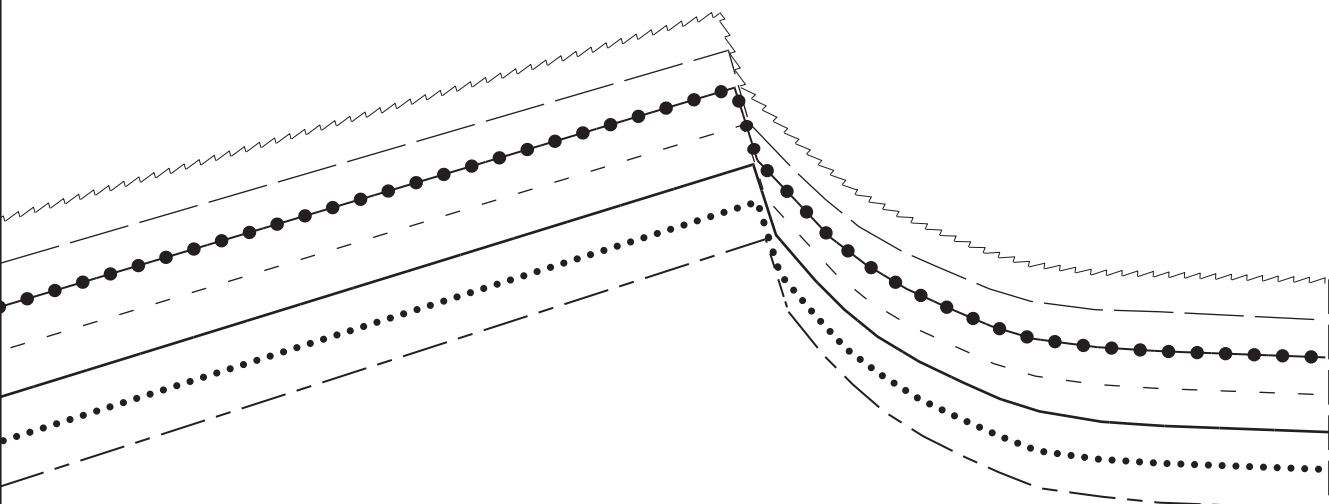
FOLDLINE

n Selfmade.com

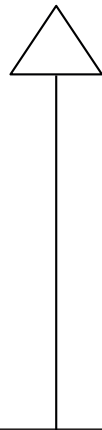
a

90





e<sup>®</sup>10



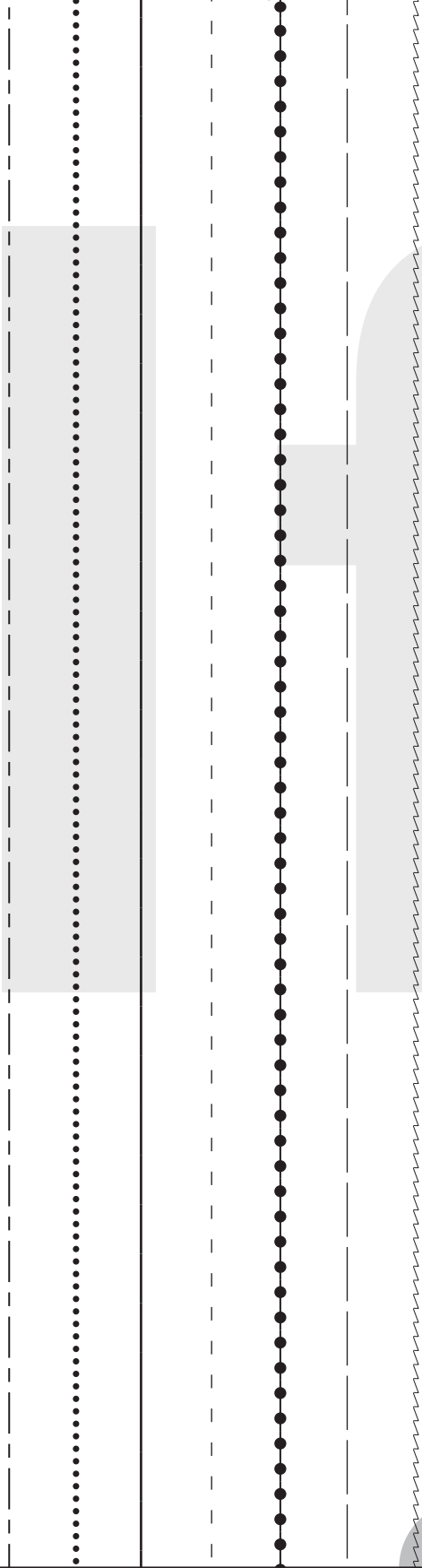
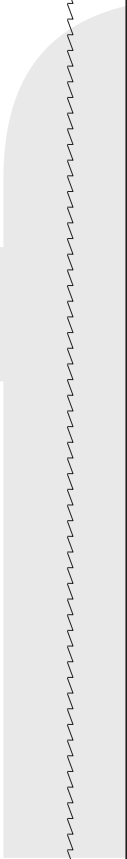
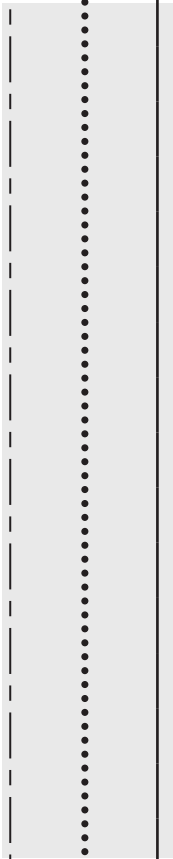
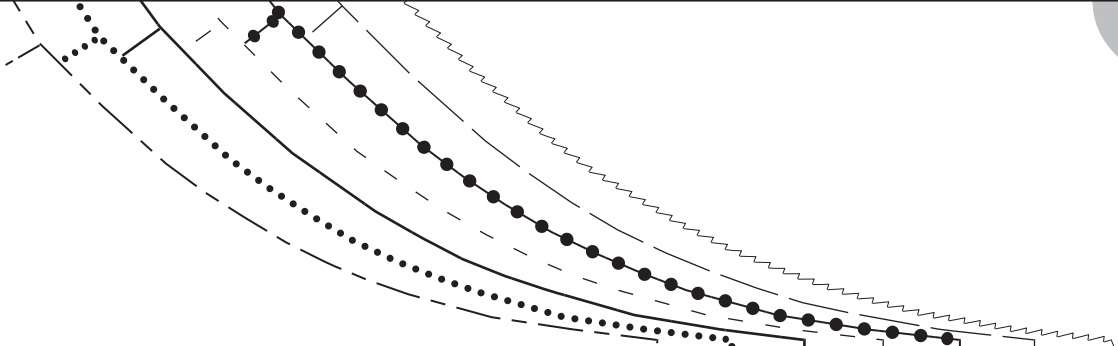
11

Self  
made<sup>®</sup>

DIY2406  
PART 1  
FRONT  
✂ x 2

INCL. SEAM ALLOWANCE

e12





Free download from

f

13

Selfmade.com

14

DIY2406  
PART 2

BACK



x1

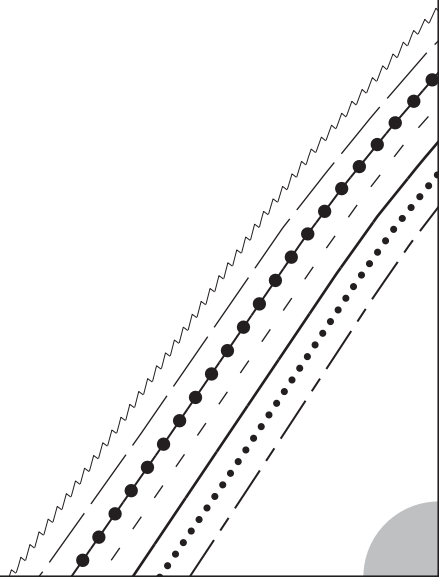
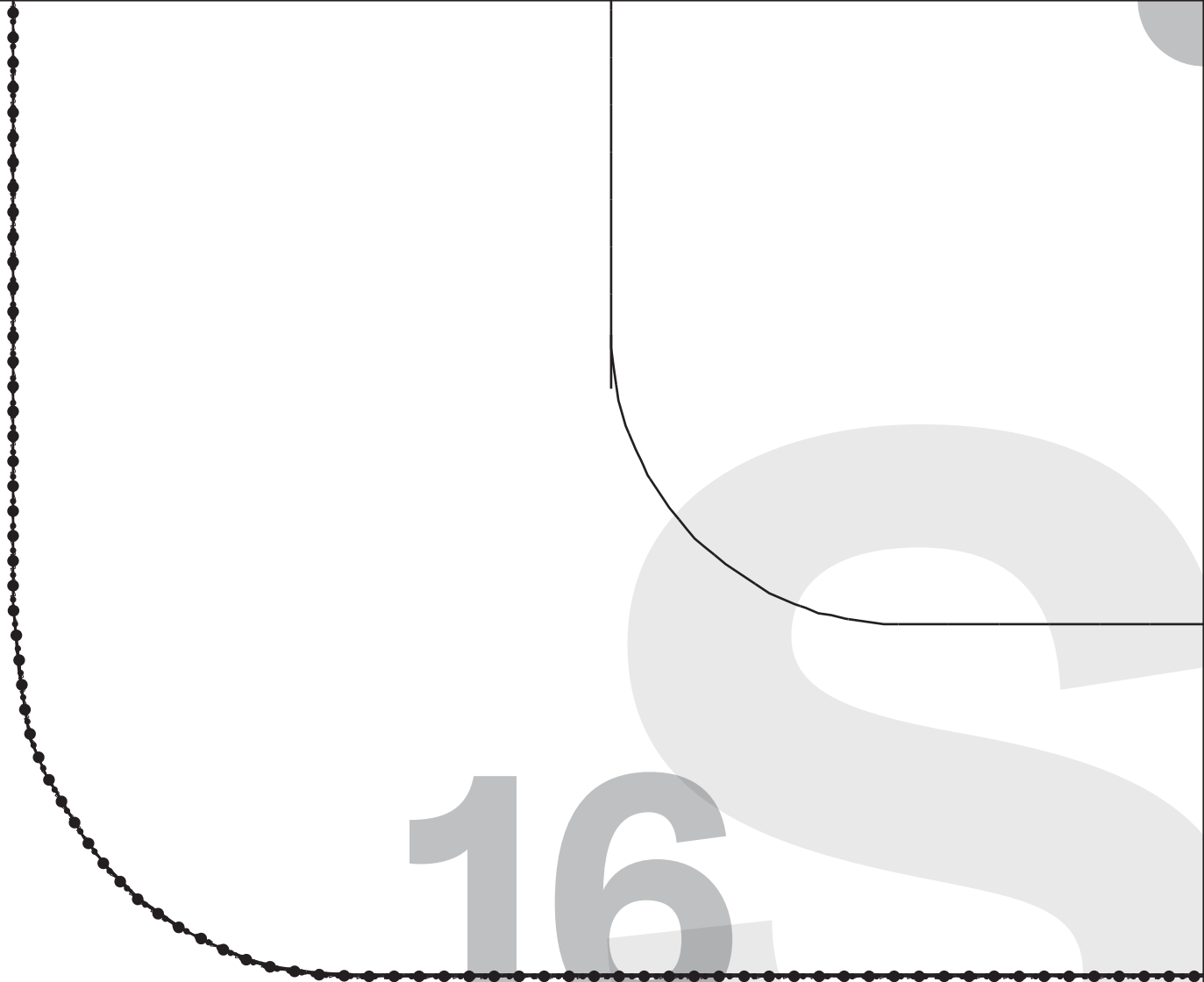
INCL. SEAM ALLOWANCE

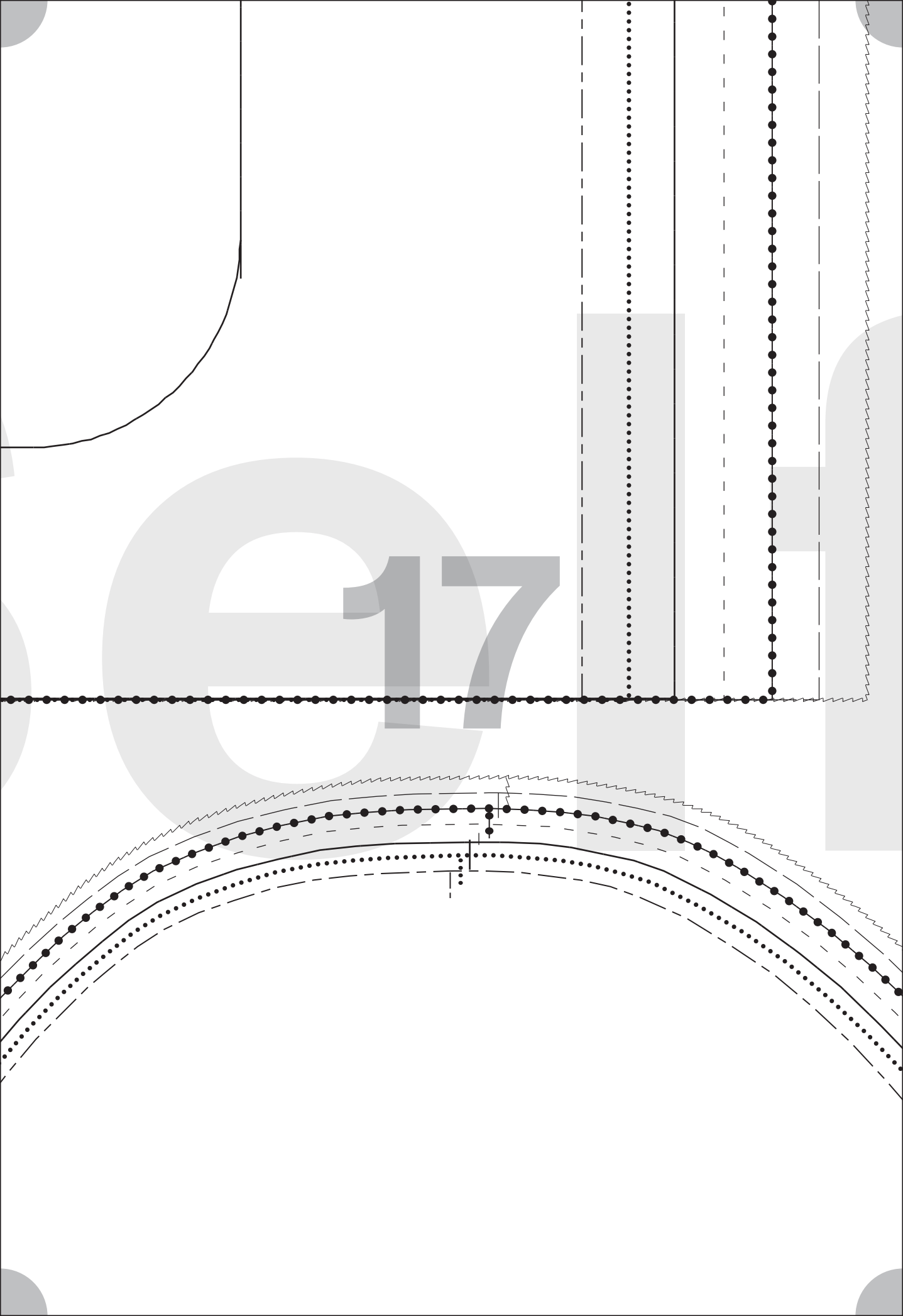
CP15

FOLDLINE

16

S



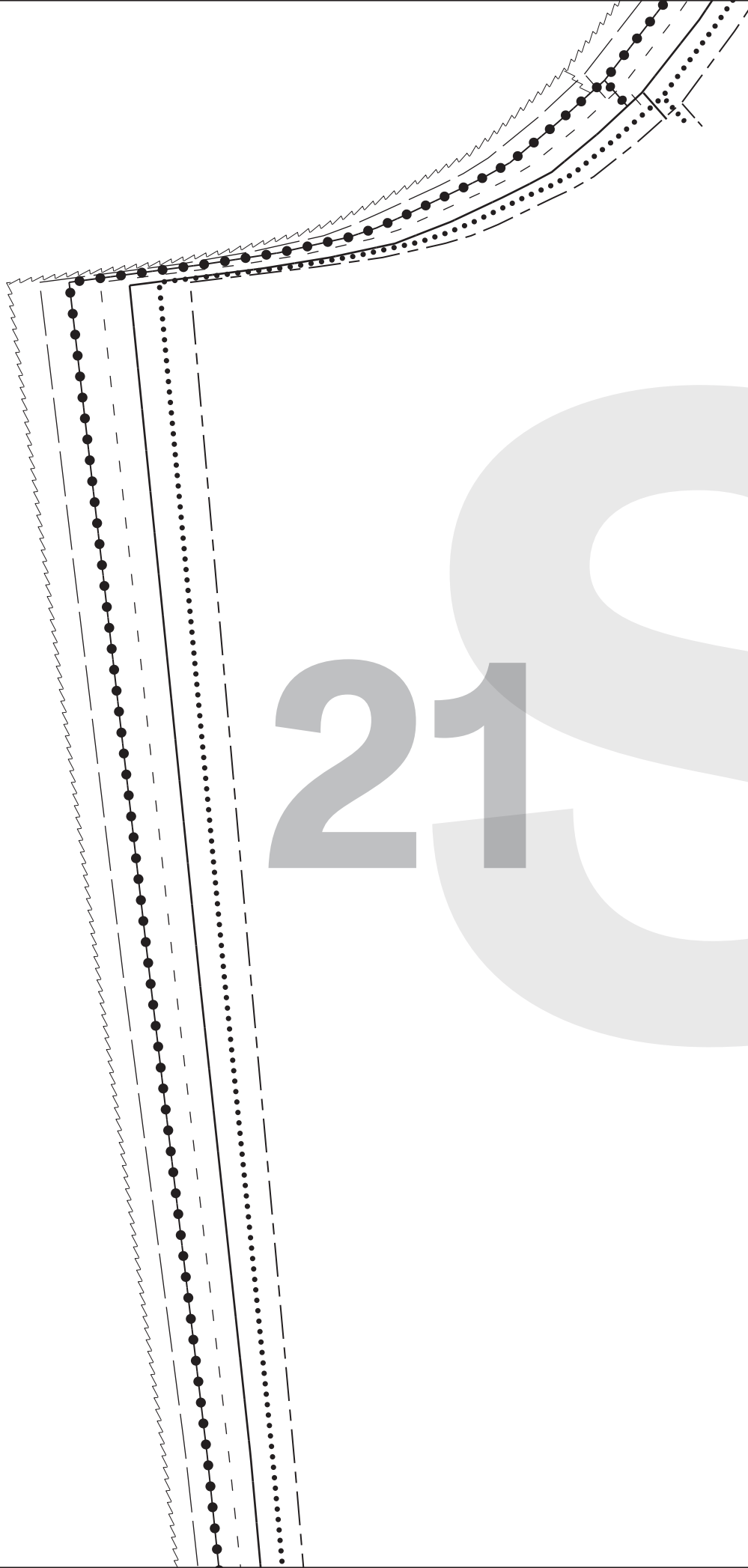




n Selfmade.com

2019

e<sup>20</sup>®



21S

DIY2406  
PART 3  
SLEEVE



x 2

INCL. SEAM ALLOWANCE

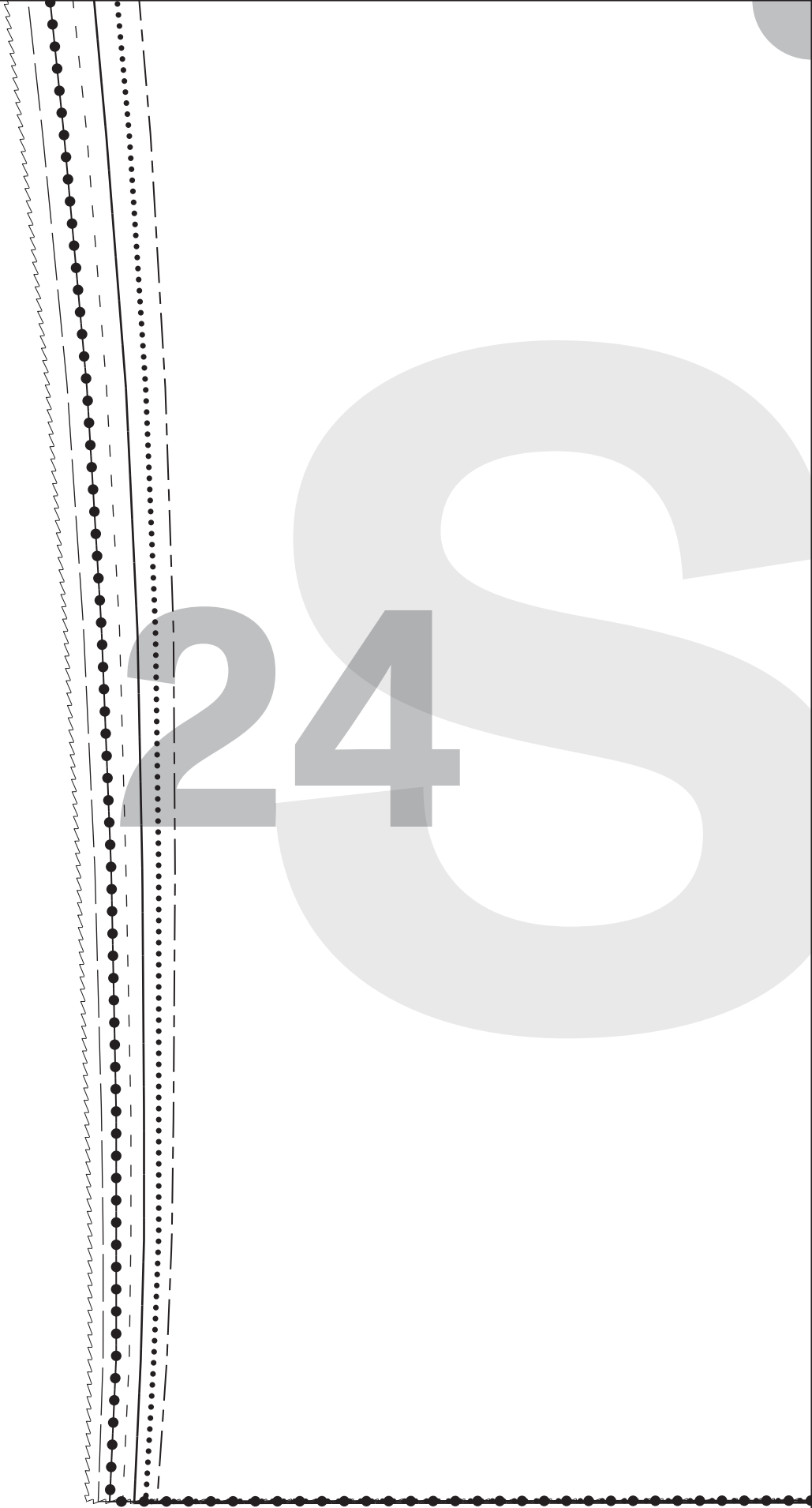




Free download from

23

24 S



€25

Free download from

Free download from

